



# WOLF HEAVY DUTY GAS GRIDDLES— ACHIEVER SERIES

## ASA SERIES

### Standard Features:

- ¾" polished steel griddle plate
- Manual ignition with surface-mounted mechanical snap-action thermostat
- Mechanical snap-action thermostat cycles burners 'ON' or 'OFF' (No "low bypass" flame setting)
- 27,000 BTU/hr aluminized steel atmospheric burner
- Direct replacement griddle for any competitors' thermostatic griddles (i.e. modulating thermostat)
- 100% gas burner and pilot safety system
- Delivers uniform thermostatic response, durability and value
- Two year parts and labor warranty

NOTE: No 30" deep, no chrome, no special splashes, no rear grease and no fully grooved.

Model Number	Total BTUs	Plate Thickness	Approx. Shipping Wt.	
			lbs	kg
ASA24	54,000	¾"	270	123
ASA36	81,000	¾"	378	172
ASA48	108,000	¾"	450	205

Freight Classification: 85



ASA48

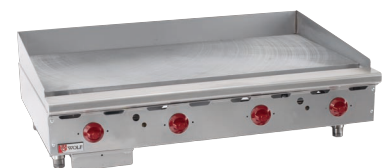
## AGM SERIES

### Standard Features:

- Manual ignition with manual gas valve control
- AGM manual controls are designed to take the heat—a favorite griddle for making fajitas at 600 °F
- Fully welded chassis—unit comes with 4" high stainless back and tapered side splashes
- Griddle plates are available fully grooved for marking of product
- Delivers excellent value, durability and simplicity
- Two year parts and labor warranty

Model Number	Total BTUs	Plate Thickness	Approx. Shipping Wt.	
			lbs	kg
AGM24	60,000	1"	285	129
AGM36	90,000	1"	400	181
AGM48	120,000	1"	480	218
AGM60	150,000	1"	650	295
AGM72	180,000	1"	790	358

Freight Classification: 85



AGM48


**WOLF**

# HEAVY DUTY ELECTRIC GRIDDLES—WEG SERIES

## Standard Features:

- One surface-mounted electric snap-action thermostat control for each 12" section
- ½" thick polished steel griddle plate
- Illuminated cycle light tells operator when griddle is at set temperature
- Temperature adjusts from 200° F to 450° F
- Two solid-sheathed incoloy heating element in each 12" cooking zone, models WEG24R and WEG36S have one
- 208/240 V, 60 Hz, 1 or 3 phase power supply required
- One year parts and labor warranty



WEG36D

Model Number	Total kW	Plate Thickness	Add to List Price			Approx. Shipping Wt.	
			Chrome Griddle Plate	Fully Grooved Plate	380V/415V/480V	lbs	kg
WEG24R	8.0	½"				165	75
WEG36S	12.0	½"				230	104
WEG36D	16.2	½"				230	104
WEG48D	21.6	½"				275	125
WEG60D	27.0	½"				345	175
WEG72D	32.4	½"				560	254

Freight Classification: WEG72D-85, All others-100

## Heavy Duty Electric Griddle Stand Kits—WEG & RRE Models

Stainless Steel Stand with Casters	Stainless Steel Stand with Flanged Legs	Approx. Shipping Wt.	
Accessory Code	Accessory Code	lbs	kg
HESTAND-24RCST	HESTAND-24RFLG	165	75
HESTAND-36DCST	HESTAND-36DFLG	230	104
HESTAND-48DCST	HESTAND-48DFLG	275	125
HESTAND-60DCST	HESTAND-60DFLG	345	157
HESTAND-72DCST	HESTAND-72DFLG	560	254

# WOLF TEPPANYAKI GRIDDLES

## Standard Features:

- Manual ignition with manual gas valve control
- 30,000 BTU circular atmospheric burner provides concentrated heat
- Polished ¾" thick steel griddle plate
- New integrated flue design eliminates the need to purchase custom trim pieces for installation
- Full gas pilot and burner safety system is standard construction
- Two years parts and labor warranty



TYG48C

Model Number	Total BTUs	Plate Thickness	Approx. Shipping Wt.		Stainless Stand with 5" Casters
			lbs	kg	Accessory Code
TYG48C	30,000	¾"	346	147	TYG48SS-STAND5
TYG60C	30,000	¾"	415	189	TYG60SS-STAND5

Freight Classification: 100